

F191x Dewpoint Meter Dimension

QUICK GUIDE

| F191x Dewpoint Meter |

—Experts in Compressed Air & Fluid Measurement—

Sensor Model	FIXINST-P	FIXINST-A	FIXINST-Q
Sensor Type	Polymer Capacitive Sensors	Aluminum Oxide Sensors	QCM Sensor
Sensor View			
Application in $> -60^{\circ}\text{C}_{\text{td}}$: Refrigerant Dryer, Industrial Gas	✓		
Application in $-80 \dots -60^{\circ}\text{C}_{\text{td}}$: Desiccant Dryer, Nitrogen Generators, Industrial Gas		✓	
Application in $-120 \dots -80^{\circ}\text{C}_{\text{td}}$: High-purity industrial gas		○	✓
Containing contaminated particles	✓	✓	

* Sensor FIXINST-A FIXINST-Q have obtained relevant patents

○ Suitable for models F139C-Puri, F305B

www.fix-instruments.com

Fix Instruments (Shenzhen) Co., Ltd.

A: 2/F, Middle Block, Building B, Te Science Park,
No. 2 Luozu industrial Avenue, ShiYan Subdistrict,
Baoan District, Shenzhen, Guangdong, China

M: sales@fix-instruments.com

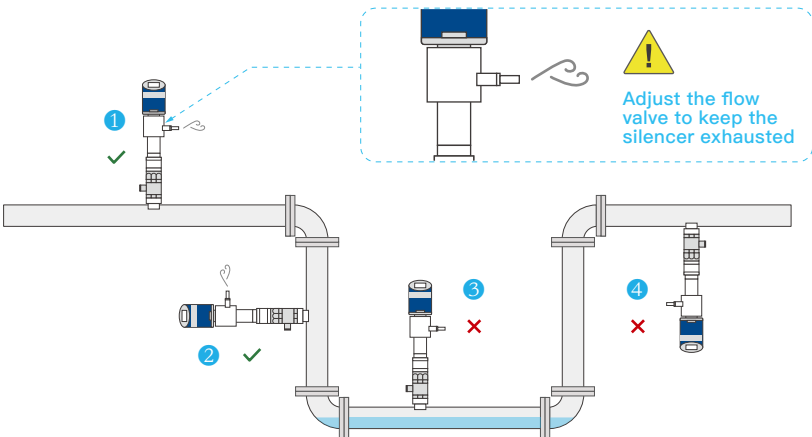
P: 0755-2359-1123

FixInst WeChat
Official Account



The following situations are recommended for installation with measuring chambers:

- A Risk of water splashing on the sensor
- B High process temperature
- C Required to install or remove measurement devices in operating, pressurized condition

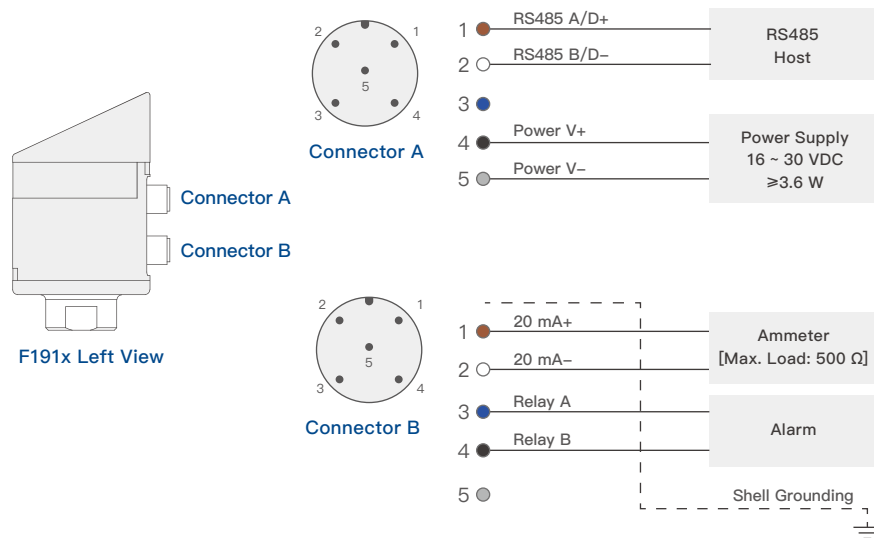
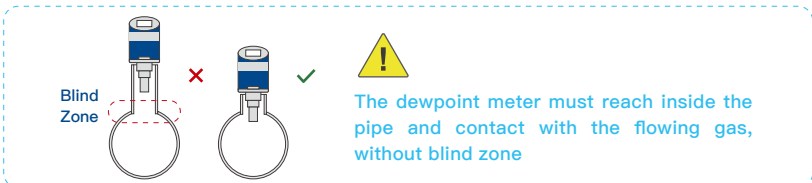
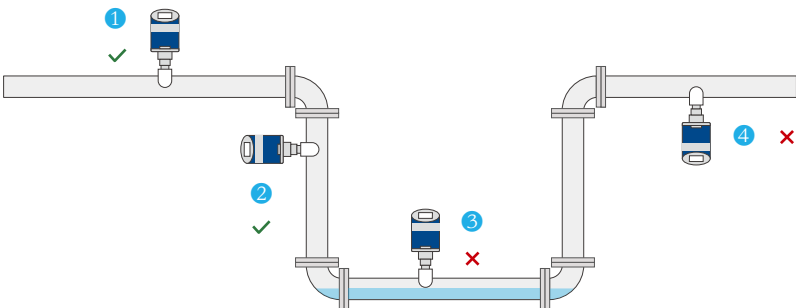


Installation Directly on the Pipeline

02

The following situations are recommended for installation directly on the pipe:

- A The gas in the pipeline cannot be exhausted directly (for example: dangerous gases or expensive process gases)



M12 Pin Definition

Connector A		Connector B		FixInst Cable Color	
Pin 1	RS485 A/D+	Pin 1	20 mA+	Brown	
Pin 2	RS485 B/D-	Pin 2	20 mA-	White	
Pin 3	N/A	Pin 3	Relay A	Blue	
Pin 4	Power V+	Pin 4	Relay B	Black	
Pin 5	Power V-	Pin 5	N/A	Grey	

! Do not tighten the M12 connection plug forcefully, the plug pins may break off !

The meter has a relay output that allows monitoring of the dewpoint. For example, when the dewpoint reaches the set value, the meter will send an alarm
Alarm Relay Max. Specification: 32 VDC / 500 mA

Status	F191x Power off	F191x Power on and alarm value not reached	F191x Power on and alarm value reached
Relay Status	Open	Open	Close