

M12 Pin Definition

Electrical connector	Pin 1	Pin 2	Pin 3	Pin 4	Pin 5
Connector A	RS485 A/D+	RS485 B/D-	N/A	Power V+	Power V-
Connector B	20 mA+	20 mA-	Pulse Output A	Pulse Output B	N/A
FixInst Cable Color	Brown	White	Blue	Black	Grey



After the flow meter is installed, the following key settings must be completed based on the actual site conditions:

Pipe size (inner diameter), gas type, reference conditions, unit settings, 4~20 mA scaling settings and pulse output settings (if analog signal is used), RS485 parameter settings (if Modbus is used)

www.fix-instruments.com

Fix Instruments (Shenzhen) Co., Ltd.

Add: 2/F, Middle Block, Building B, TG Science Park, Luoqu Industrial Str. 2, Shenzhen 518108 , Guangdong, China

E-mail: sales@fix-instruments.com

Tel: 0755-2359-1123

FixInst WeChat
Official Account



Download the
Bluetooth APP

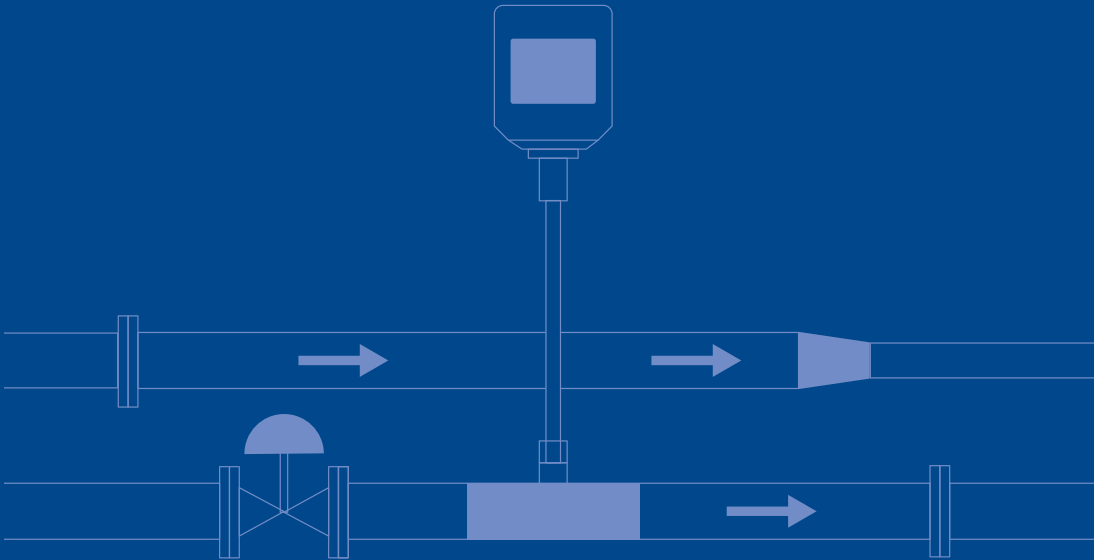


FIXINST

F211x & F212x Series

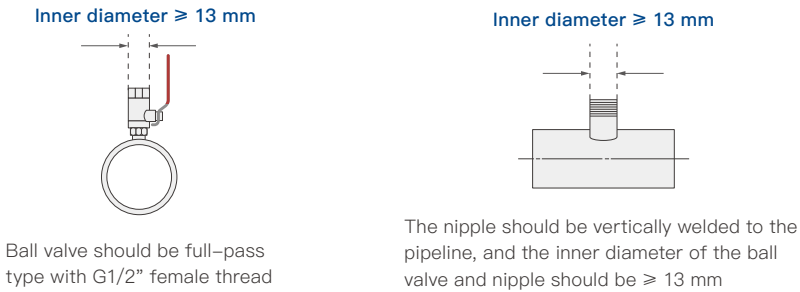
QUICK GUIDE

| Thermal Gas Mass Flow Meter |

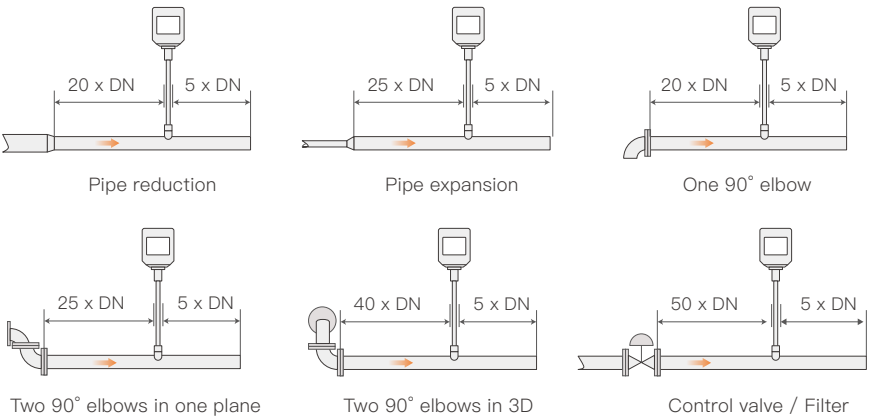


— Experts in Compressed Air & Fluid Measurement —

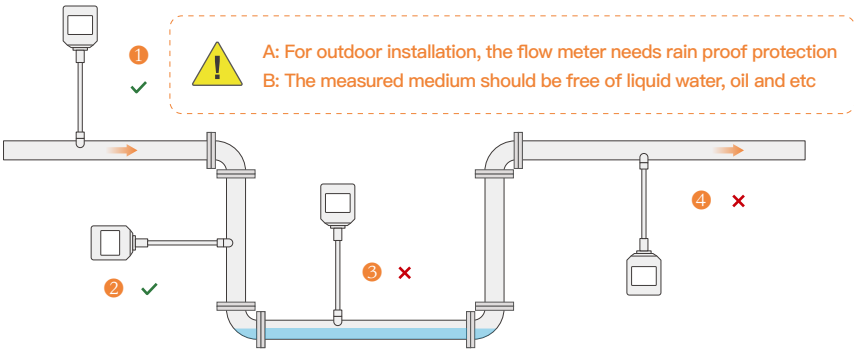
Installation of the flow meter requires a ball valve and a male threaded nipple



Recommended inlet and outlet straight section (*DN: Nominal Diameter)



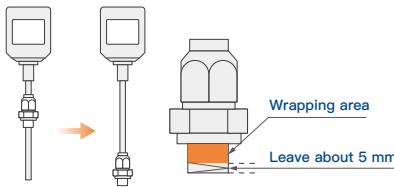
Installation direction and attention



F211x Insert type

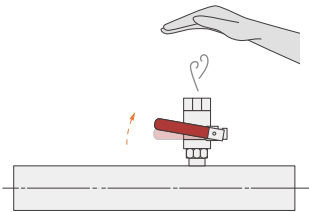
Wrap-around sealing tape

Adjust the fastening nut to the end of the rod, wrap the sealing tape (at least 20 turns), leaving 5mm above the sealing tape to prevent the tape from entering the pipe

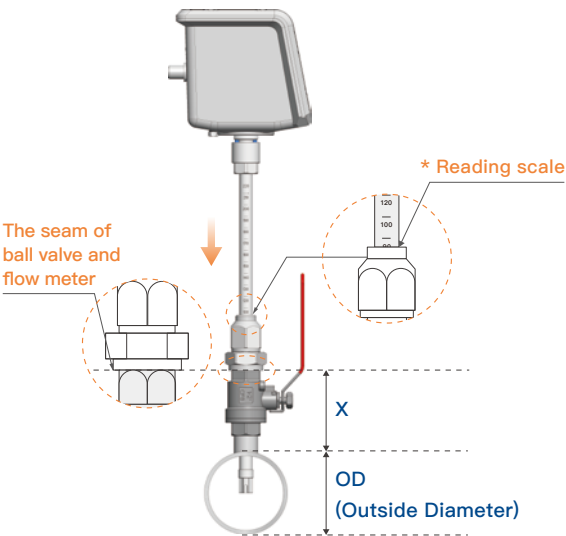


Check gas cleanliness

After confirming that the direct discharge of gas from the pipeline does not pose a safety risk, slightly open the ball valve to check whether the gas is clean, after confirming that it is clean, close the ball valve, clean the inner wall of the ball valve and ready for installation

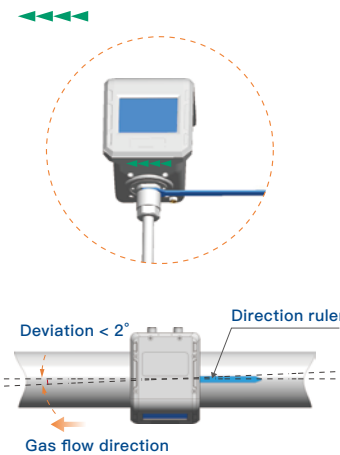


Flow Meter Insertion Depth
 $= X + OD / 2$

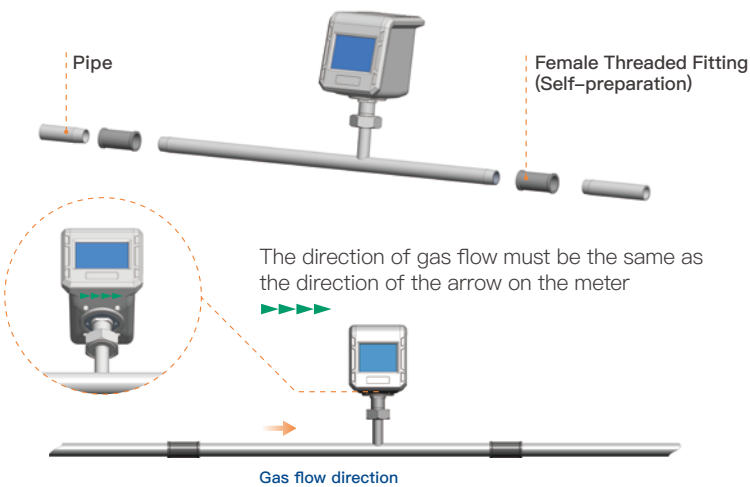


Horizontal calibration of the flow meter

The direction of gas flow must be the same as the direction of the arrow on the meter



F212x thread type



F212x flange type

